

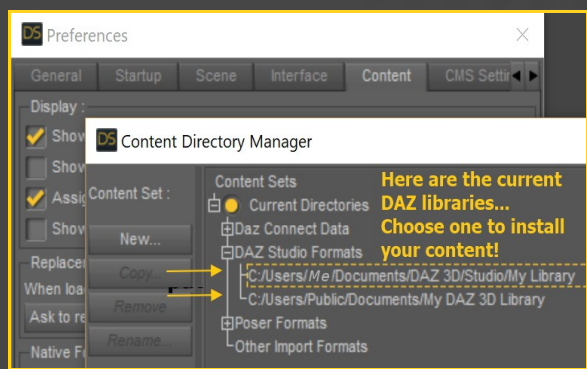
RIDING ACADEMY FOR DICKTATOR & FUTALICIOUS

~~Mini-tutorial~~

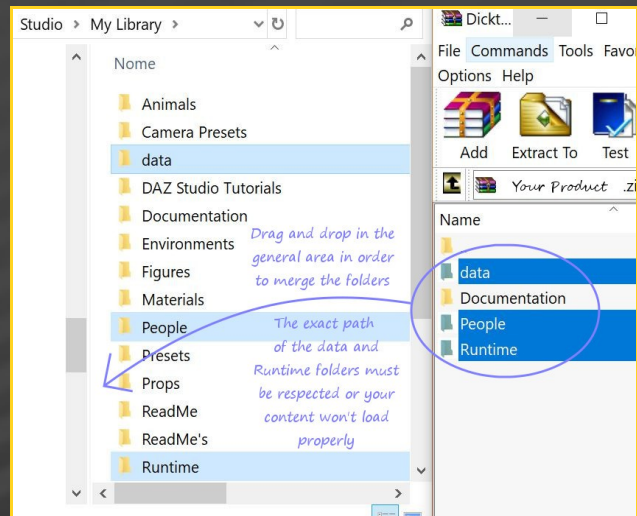
1 - What is Riding Academy?

Riding Academy is a morph and textures add-on for Futralicious and Dicktator that transforms its human shape to a horsy one. It works for all **v3** versions of Futralicious and Dicktator: G3F, G8F, G3M and G8M. It is compatible with G3F and G8F versions of Roasty.

2 - How to install it?



Locate your main DAZ folder. It may be something like C:\Users\Public\Documents\My DAZ 3D Library.



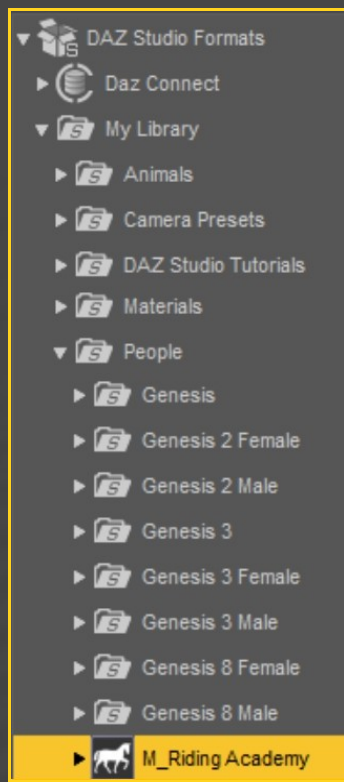
Merge the contents of the .zip file with your main DAZ folder, where your G8M content is installed. For MAC users: follow instructions here:

<http://www.renderotica.com/community/forums.aspx?g=posts&t=204659&cmsg=0&cmsn=>

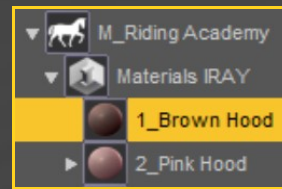
---> It is important that the **data** and **Runtime** folders are properly installed in your content library folder with the exact path provided in the zip (installing in a sub-folder is a common mistake), otherwise textures won't be found.

3 - Where is my content?

You can access to the graft and presets in your Content Library tab under People/M_Riding Academy:



Academy/Materials Iray/1_Brown Hood (or 2_Pink Hood) folder.



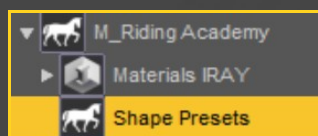
5 – Morphs setup

You can access all morphs and presets in the parameters tab with Dicktator of Futalicious selected. Flacidity presets can be accessed in the Posing tab.



4 – Quick Setup

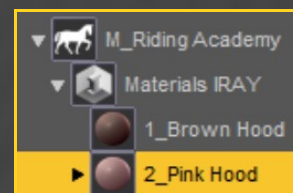
- First, set up Futalicious/Dicktator (with or without Roasty) as usual: load it on the figure with its shell, and run the 'Material copy' script. You don't need to load a human texture preset on the shell;
- Select Futalicious/Dicktator graft and load a horse shape preset from the People/M_Riding Academy/Shape Presets folder;



- Select Futalicious/Dicktator Shell and load a texture preset from the People/M_Riding

6 – Pink hood setup

Pink hood setup is a little more complex, because the hood has to match your main character's tone.

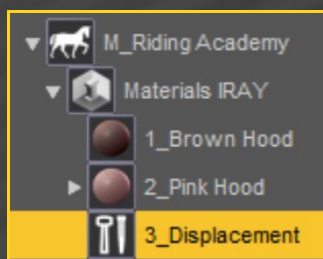


- With the shell selected, load 'Pink_Apply first';
- Select one blush and mask setup;
- Select one hood blend setup. Several presets are provided for G3F/G8F/G3M/G8M characters.

If your character isn't included in the 'Character presets' folders, you may select one from the 'Basic preset' folder instead and edit it: select the shell genitalia surfaces, lower Translucency weight to raise brightness, and lightly edit the Base color tone.

7 – Displacement

Displacement presets can be loaded on the Shell from the People/M_Riding Academy/Materials Iray/3_Displacement folder.

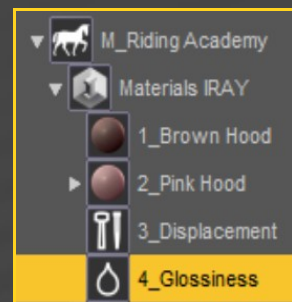


They have been sculpted on the horse shape for better results. They can be used on the human shape, but there will be some stretching. If you use human veins presets on the horsy shape, results may vary.

8 – Gloss

Glossiness presets can be loaded on the Shell from the People/M_Riding Academy/Materials Iray/4_Glossiness Folder.

Included are options to apply glossiness on the whole gen, or on the shaft only.



9 – Notes

- All presets are for Iray only
- All presets are applied on Futalicious/ Dicktator Uvs v2. M4 & G3M gen Uvs included in Texture Wizard aren't supported.