

# INSTRUCTIONS

- This set contains: Wall, Floor, Bench, Glass, Tap, Shower Head Holder, Handle, 2 Shower Heads, Hose and its Root, 2 Water Props and Water Decal.

As a BONUS you also get 5 sets of poses and a simple Wet Shell for Genesis 9.

## - LOADING THE SET

Use the "Base Full Setup Scene Subset" ("Full Set" icon) to load the full set with one click.

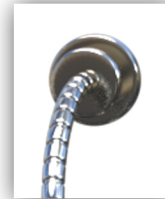
Everything will be loaded, parented, and posed to create a shower scene (except the Shower Head 02, Water 02 and Water Decal, you can manually load those if you want).



It is also possible to load each prop manually.

## LOADING TIPS FOR MANUAL LOADING

- Load the Hose Root first and then load the Hose with the Hose Root selected in the scene, this will properly position the Hose on the Hose Root.



- Load the Shower Head 01 or Shower Head 02 with the Hose selected, this will position the Shower Heads on the end of the Hose, and allow them to follow the movement of the Hose.



- Load the Water 01 with the Shower Head 01 selected in the scene, load the Water 02 with the Shower Head 02 selected in the scene, if you want the Water props to follow the Shower Heads.

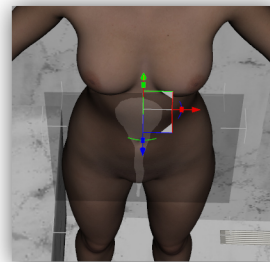
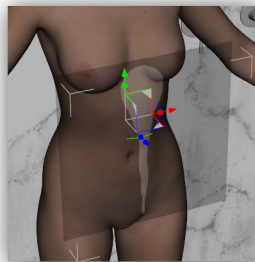
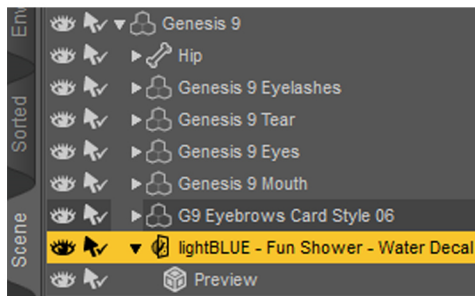
To bend the Water use the "Bone 2".



- Load the Water Decal with the figure on which you want to use it selected in the scene. It will only be visible if it is parented to the figure.

If you want to move the Decal always use its root (do not use the "Preview" as it is only there to show you approximately where the decal will show up in renders).

The Decal should always be positioned in such way that the blue arrow is pointing away from the figure on which the Decal is used (when the Universal tool is selected).



- Load the Wet Shell G9 with a G9 figure selected in the scene.

# INSTRUCTIONS

## – POSING THE HOSE

The Hose is completely rigged and posable. It has 75 bones that you can select and rotate in the desired position. If the Hose is parented on the Hose Root, do not use its first bone (Bone 01) during the posing as it should stay in the position on the Hose Root.

For the posing of the hose you can also use its 6 easy pose sliders located in the General section of the Parameters Tab.

Easy posing sliders of the Hose:

Twist 3/3 - twists the whole Hose.

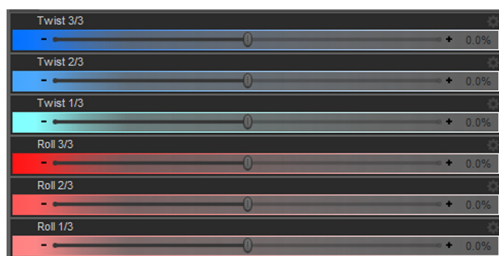
Twist 2/3 - twists the last two-thirds.

Twist 1/3 - twists the last one-third.

Roll 3/3 - rolls the whole Hose.

Roll 2/3 - rolls the last two-thirds.

Roll 1/3 - twists the last one-third.



## BONUS POSES

The BONUS poses are added to make it easier for you to start posing and to see some of the many possible scenarios in which the props can be used.

The "Base Full Setup Scene Subset" ("Full Set" icon) was used for all of the bonus poses, for some of them you will also need Shower Head 02, Water 02 and the Water Decal.

The base female G9 is used in all poses, and there is also base male G9 used in the pose 05. Genital models are Golden Palace G9 and Dictator G9 by Meipe.

### LOADING THE BONUS POSES:

- Use the "Base Full Setup Scene Subset" ("Full Set" icon) to load the full set.

#### - POSE 01 -

- Select the G9 (Base Female) and apply the pose "G9F".

- With the G9 selected load the Water Decal, select the Water Decal and apply the "Water Decal" pose.

- Select the Water 01 and apply the pose "Water 01".

#### - POSE 02 -

- Select the G9 (Base Female) and apply the pose "G9F".

- Select the Golden Palace G9 and apply the pose "Golden Palace G9".

- With the G9 selected load the Water Decal, select the Water Decal and apply the "Water Decal" pose.

- Select the Hose and apply the pose "Hose".

- Select the Shower Head 01 and apply the pose "Shower Head 01".

#### - POSE 03 -

- Select the G9 (Base Female) and apply the pose "G9F".

- Select the G9 (Base Female) and apply the "G9F Shape".

- Select the Golden Palace G9 and apply the pose "Golden Palace G9".

- With the G9 selected load the Water Decal, select the Water Decal and apply the "Water Decal" pose.

- Select the Hose and apply the pose "Hose".

- With the Hose selected load the Shower Head 02, select the Shower Head 02 and apply the pose "Shower Head 02"

(Shower Head 01 and Water 01 should be removed or with visibility switched off for this pose).

- Load Water 02 **with nothing selected in the scene**, apply the pose "Water 02" on it.

#### - POSE 04 -

- Select the G9 (Base Female) and apply the pose "G9F".

- With the G9 selected load the Water Decal, select the Water Decal and apply the "Water Decal" pose.

- Load Water 02 **with nothing selected in the scene**, apply the pose "Water 02" on it.

(Shower Head 01 and Hose can be used in their base position, Water 01 should be removed or with visibility switched off)

#### - POSE 05 -

- Select the G9 (Base Female) and apply the pose "G9F".

- Select the G9 (Base Female) and apply the "G9F Shape".

- Select the Golden Palace G9 and apply the pose "Golden Palace G9".

- Select the Golden Palace G9 and apply the "Golden Palace G9 Shape".

- Select the G9 (Base Male) and apply the pose "G9M".

- Select the Dictator G9 and apply the pose "Dictator G9".

- Select the Hose and apply the pose "Hose".

- With the Hose selected load the Shower Head 02, select the Shower Head 02 and apply the pose "Shower Head 02"

(Shower Head 01 and Water 01 should be removed or with visibility switched off for this pose).

- Load Water 02 **with nothing selected in the scene**, apply the pose "Water 02" on it.

## – MATERIALS

Make sure to load the material preset with the right prop selected in the scene.

The Bench, the Wall and the Floor have 3 matching material presets, but to each must be loaded its own material.

There are also 4 metal material presets that can be loaded on any metal part including the metal parts on the Glass prop (select the Glass to apply it).

Metal parts include: Drain, Glass, Handle, Holder, Hose Root, Hose, Shower Head 01, Shower Head 02, and Tap.

